

AlphaTreat 1200L Packaged Pump Station



INSTALLATION GUIDE

WES PPS-S 1200L Single Sewer
WES PPS-S 1200L Dual Sewer

WES PPS-S 1200L Single Grey Water
WES PPS-S 1200L Dual Grey Water



AlphaTreat 1200L Packaged Pump Station Installation Guide

1. IMPORTANT

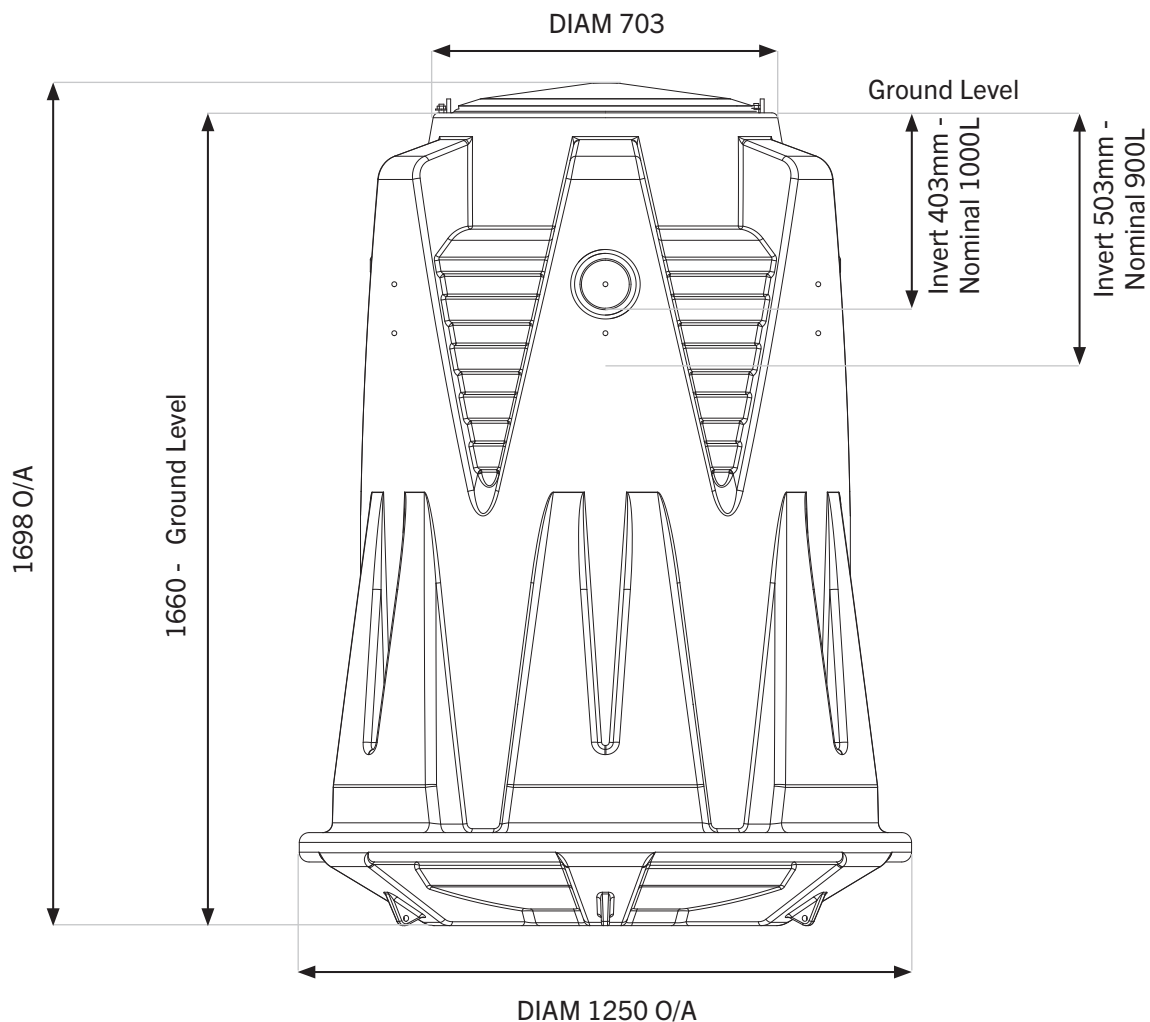
- Never allow cable ends to be submerged
- Only qualified personnel should install, operate and repair your pump station system. Any wiring of pumps should be performed by a qualified licensed electrician. Isolate all electrical supply before installation. Lock out power and tag.
- Before installation, local authorities must be consulted for all applicable codes and regulations.

2. GENERAL

The Packaged Pump Station is to be installed, by a licensed plumber, as per these instructions and local authority requirements.

This Packaged Pump Station is supplied as a complete unit, however other pipe and electrical requirements are to be supplied and carried out by the relevant licensed tradesperson.

The Packaged Pump Station is of 1200L nominal capacity and can be set to either 1000L or 900L capacity by selection of the inlet pipe level. The Pump Well Vessel is approved to the requirements of the Australian Standard AS/NZS1546.1 Onsite domestic wastewater treatment units – Septic tanks. Lic SMK1651. Approvals and additional information on the Packaged Pump Station operation and maintenance can be obtained from www.wastewaterequipment.com.au



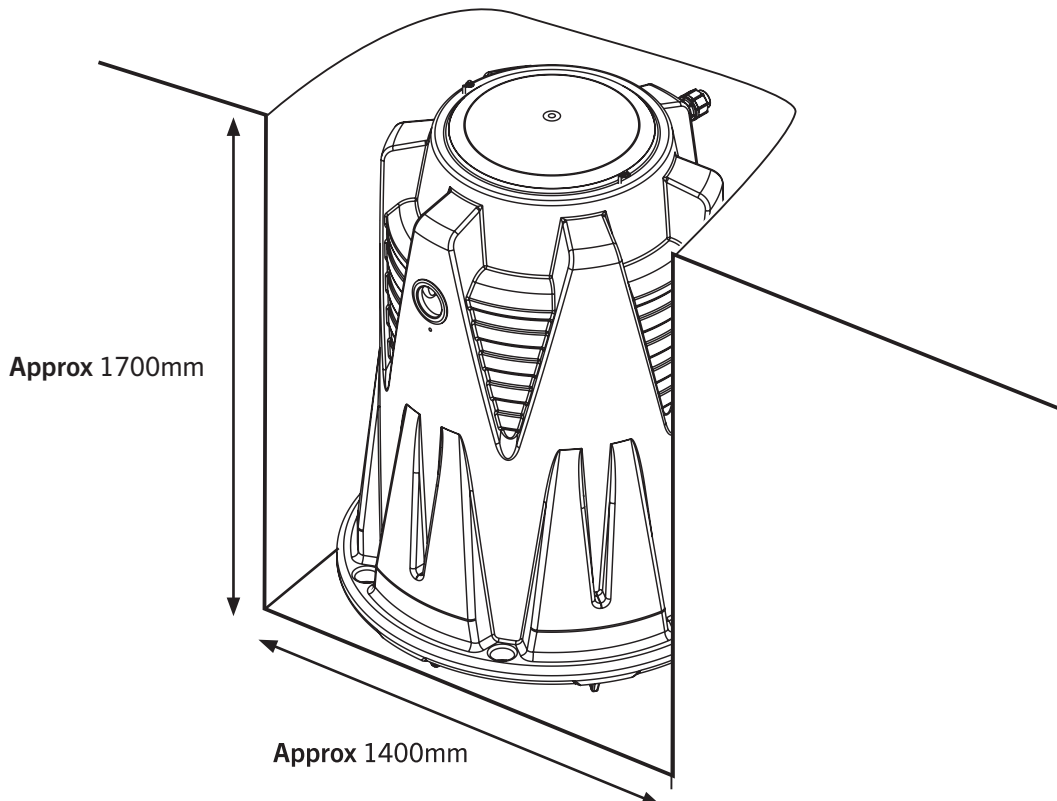
3. EXCAVATION

The Packaged Pump Station is to be sited:

- Away from building foundations,
- Away from traffic areas, both vehicular and pedestrian,
- Away from or fenced off from animal stock pastures and areas.

The requirements for excavation are:

1. Excavate site for installing tank in ground as per building code and local authority requirements.
2. Ensure adequate pipe fall to inlet of the Packaged Pump Station, Refer to the tank dimensions diagram for correct levels.
3. The Packaged Pump Station requires an excavation approximately 1700mm deep and 1400mm in



diameter (the exact depth will vary due to land fall and depth of bedding sand used)

4. Do not bury tank lid. The access cover must be finished at normal ground level, making allowance for the type of access cover, to allow ongoing Packaged Pump Station inspection and maintenance. (Refer to installation drawings.)
5. In the base of the excavation prepare a level 50mm bed of compacted sand or soft compactable fill, free of large and/or sharp objects to allow full support of the specially shaped base.
6. Carefully lower tank base into excavation - **do not drop**.
7. Ensure the Packaged Pump Station is level.
8. Once installed into the excavation never leave the vessel unattended without the Manhole/Access Cover secured in place.

4. CONNECTIONS

Inlet

1. Inlet Connection to the Packaged Pump Station is via 100mm PVC DWV Sewer pipe through the pipe seal connection. Use a 127mm Hole Saw.
2. Ensure the pipe seal is clean and correctly seated. Use a standard jointing lubricant.
3. Apply lubricant to spigot of pipe and ease the pipe through the seal until the pipe protrudes inside the Packaged Pump Station at least 150mm.

Pump

1. Remove the Manhole/Access Cover to install the pump. Carefully lower and position the pump into the Packaged Pump Station.
2. Connect the discharge pipe via the barrel union
3. Connect the pump power cable to a general power outlet
4. Seal any connection ports made in the top of the Packaged Pump Station with silicone.
5. Check correct operation of pump and floats - The floats attached to the pump switch the pump on when the level of fluid inside the Packaged Pump Station is at the High Level line. The pump should switch off to ensure the pump remains primed i.e. liquid level is no lower than the bottom of pump. The High Level alarm should activate if the level reaches the High alarm level.
6. Remove tape from high level alarm float and connect liquid level alarm box to general power outlet.

Discharge

1. Discharge connection is via a threaded 40 mm BSP connection

Control Panel

1. Electrician is to mount and connect supplied control panel in a suitable location

5. TANK ANCHORING

1. The Packaged Pump Station is provided with a large 125mm wide anchoring flange. In normal conditions this flange will anchor the tank when backfilled with correctly compacted clean fill.
2. In areas of high water-table or unstable soils, the underside of the vessel includes 6 mounting points can be used with M12 Reo-Bar locked into concrete for additional anchorage.
3. Where the bottom of the vessel is below maximum ground water level, bed the Packaged Pump Station down into fresh concrete and pour additional concrete around vessel sides up to a minimum of 75mm above the flange.
4. To confirm the extent of any additional ballast required, the specification of footings or surrounding concrete, contact a site engineer.

6. COMPLETION

1. Fill the Packaged Pump Station with water to the level of the invert of the inlet pipe (pump to be switched off), prior to any backfilling, compaction or concrete pour.
2. Fit Manhole/Access Cover. Manhole cover should always be fitted to prevent unauthorised entry.
3. Where higher class load access covers are required, refer to installation drawings as a guide.

4. Ensure that under the base and flange is fully supported prior to backfilling. Backfill around the Packaged Pump Station with clean fill. Only use clean fill and ensure full compaction in layers of the clean fill until the top. Do not use excavation waste, rubble rocks or large objects. Pour concrete if required.
5. The Packaged Pump Station must not be buried when finished. The Manhole/Access Cover must be at ground level to ensure access for maintenance. The Packaged Pump Station can be covered with light mulch or garden bark only. Ensure all surface water run-off is directed away from pipe trenches, septic tanks and the Packaged Pump Station.
6. Upon completion pump out the water used for the backfilling process and check correct operation of pump floats and level alarm.
7. Secure Manhole/Access Covers in place.
8. Refer to the installation drawings and seek professional advice for Class B & Class D Access Cover installations.

7. MAINTENANCE

Installation conditions will determine regularity of maintenance intervals. However, all installations should be serviced once every 12 months. More regular servicing is required for applications where there are abrasive particles in the sewage, excessive silt or debris entering the pit, or where the pumps are subject to heavy usage. Particular care should be taken to keep the pit clean while construction works are in progress.

In addition to the requirements included in the pump manufacturer's installation and operating instructions:

1. Avoid electric shock. Isolate pumps and controls before starting work.
2. Check external condition of pumps and control gear.
3. Check pumps for wear.
4. Check condition of electrical equipment.
5. Check pit for sludge build-up/presence of foreign objects – remove if necessary.
6. Check that pump cables are securely tied up and that float switch movement is not obstructed.
7. Check system operation.

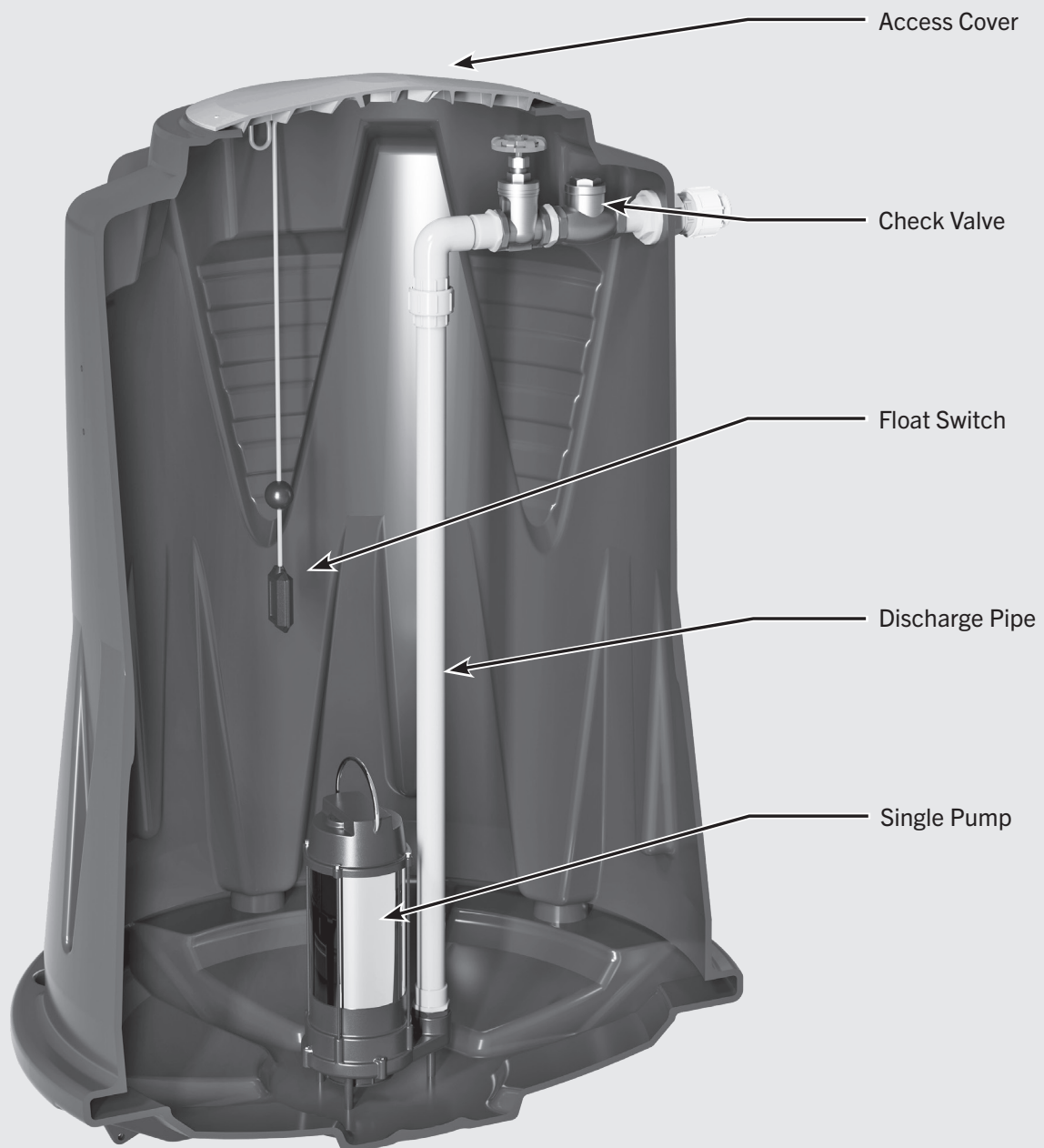
8. SAFETY WHEN SERVICING

- Be aware of “Confined Spaces” guidelines.
- To reduce the risk of electrical shock, always disconnect the pump from the power source before handling or servicing. Lock out power and tag.
- Do not wear loose clothing that may become entangled in the impeller or other moving parts.
- Keep clear of suction and discharge openings. DO NOT insert fingers in pump whilst power is connected.
- Always wear appropriate safety gear such as safety glasses when working on the pump or piping.
- Cable should be protected at all times to avoid punctures, cuts, bruises and abrasions.
- Never handle connected power cords with wet hands.
- To reduce the risk of electrical shock, all wiring and junction connections should be made in accordance with local codes and regulations.

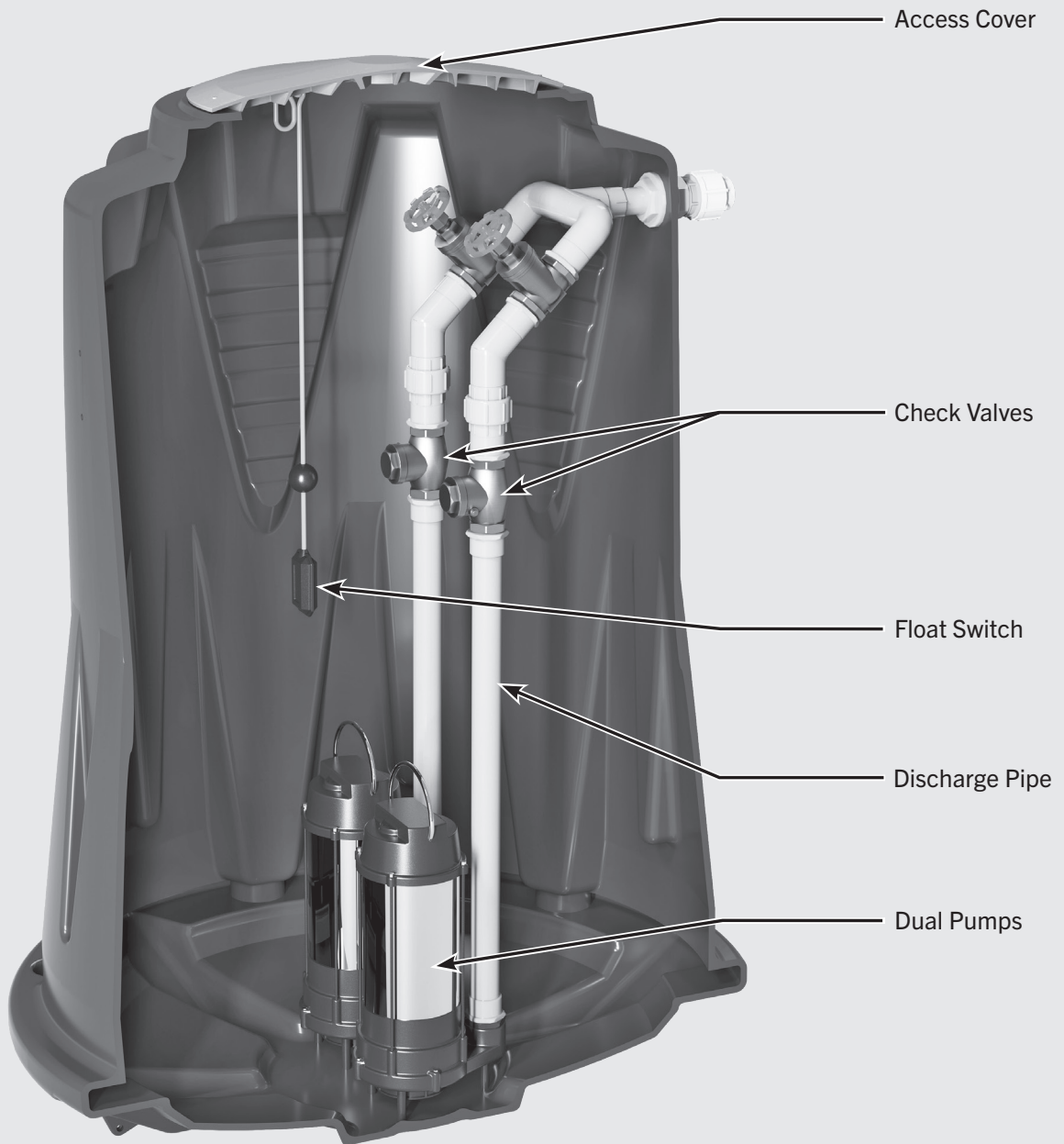
9. DRAWINGS

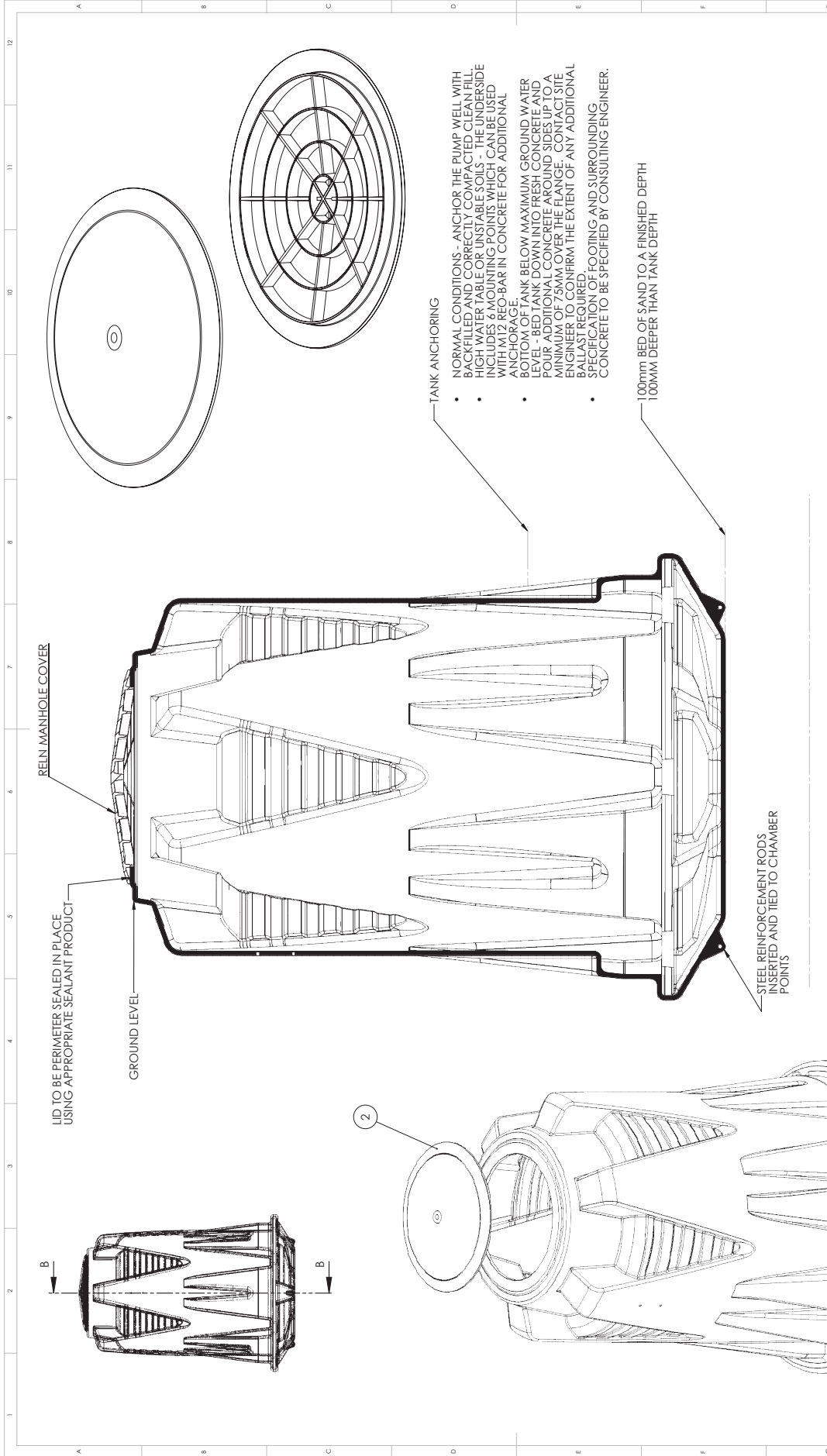
General Section Views and Installation Guide Drawings follow.

Single Pump Packaged Pump Stations



Dual Pump Packaged Pump Stations





ITEM NO.	PART NUMBER	DESCRIPTION	QTY.
1	7971 AT 1200 01 a	Pump Well 1200L	1
2	RN0006621	Plastic (Septic) Access Cover	1

- TANK ANCHORING**
- NORMAL CONDITIONS - ANCHOR THE PUMP WELL WITH BACKFILLED AND COMPACTED CLEAN-FILL HIGH WATER TABLE OR UNSTABLE SOILS - THE UNDERSIDE INCLUDES 6 MOUNTING POINTS WHICH CAN BE USED WITH M12 REO-BAR IN CONCRETE FOR ADDITIONAL ANCHORAGE.
 - BOTTOM OF TANK BELOW MAXIMUM GROUND WATER LEVEL - BED TANK DOWN INTO FRESH CONCRETE AND POUR ADDITIONAL CONCRETE AROUND SIDES UP TO A MINIMUM OF 75MM COVER THE FLANGE. CONTACT SITE ENGINEER TO CONFIRM THE EXTENT OF ANY ADDITIONAL SPECIFICATION REQUIRED FOR FOOTING AND SURROUNDING CONCRETE TO BE SPECIFIED BY CONSULTING ENGINEER.

100mm BED OF SAND TO A FINISHED DEPTH
100MM DEEPER THAN TANK DEPTH

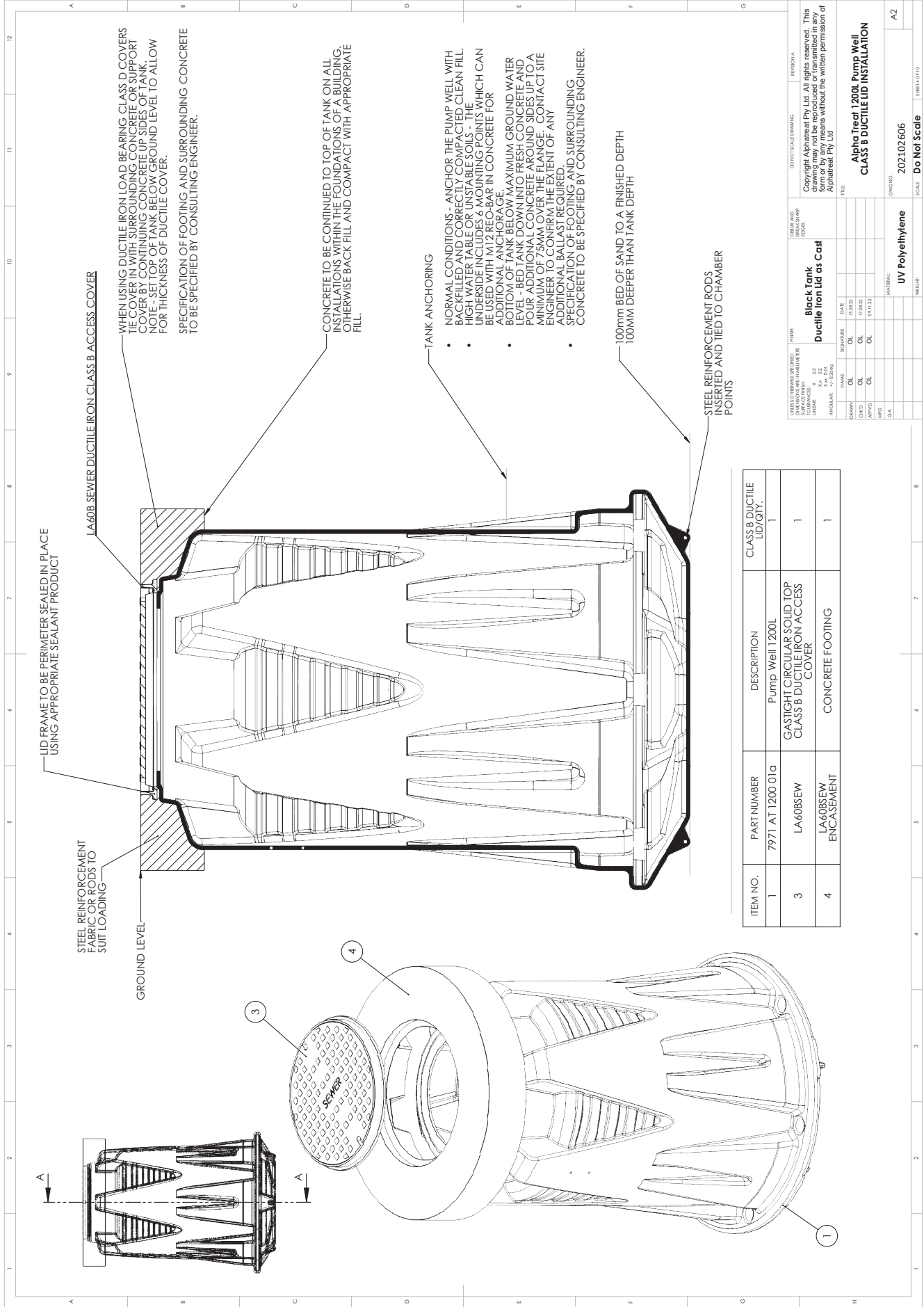
UNLESS OTHERWISE SPECIFIED, MATERIALS SHALL BE AS SHOWN IN THE DRAWING AND TO BE SUPPLIED BY THE CONTRACTOR.

ITEM	DESCRIPTION	REVISED
1	Black Tank Green Lid Sld	
2	UV Polyethylene	

Alpha Treat 1200L Pump Well REIN MANHOLE COVER INSTALLATION

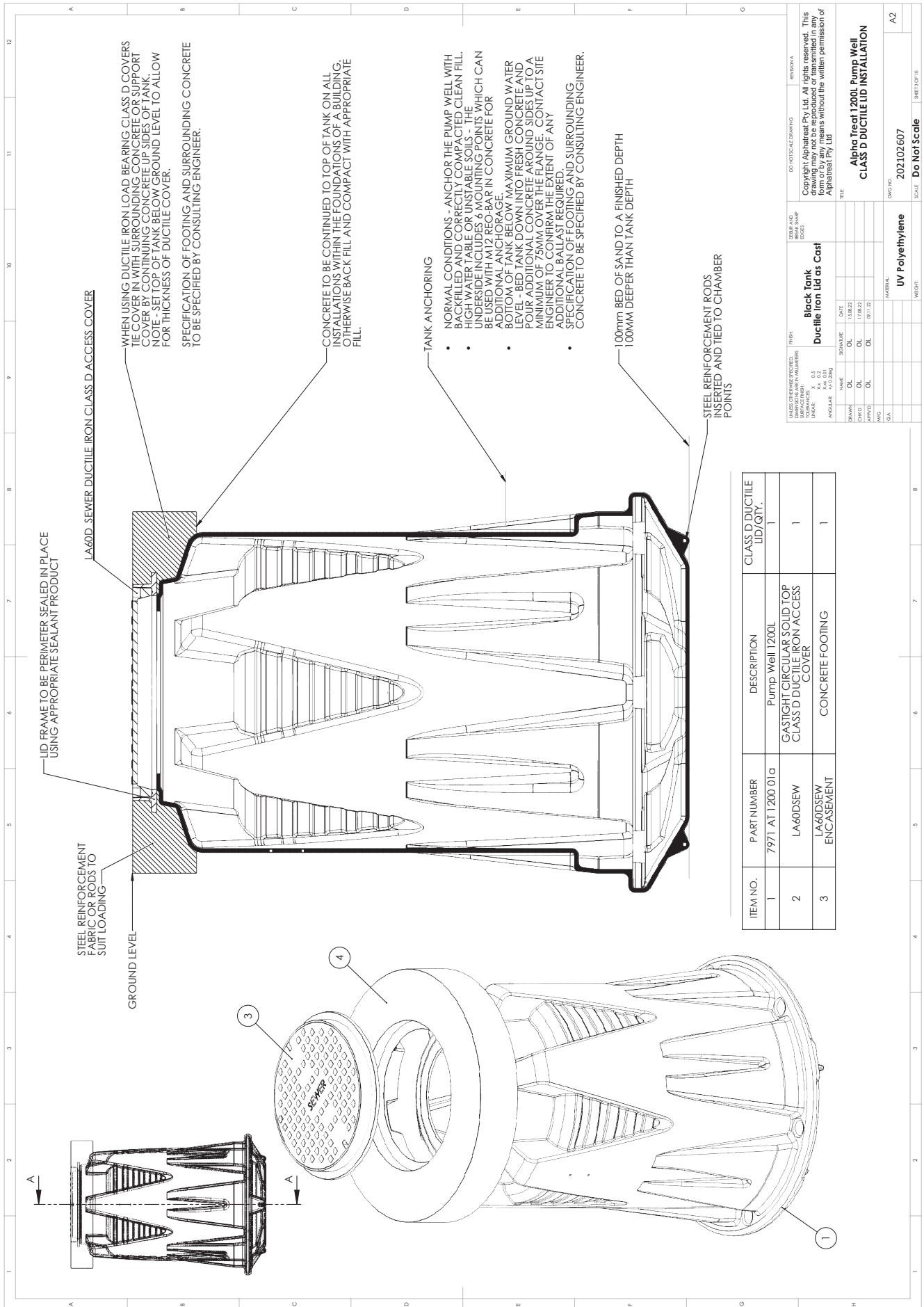
DWG NO: 202102605
SCALE: Do Not Scale

DATE: 13/08/21
BY: [Signature]
CHECKED: [Signature]
APPROVED: [Signature]
DIA: [Signature]



ITEM NO.	PART NUMBER	DESCRIPTION	CLASS B DUCTILE LID/ QTY.
1	7971 AT 1200 01a	Pump Well 1200L	1
3	LA60BSEW	GASTIGHT CIRCULAR SOLID TOP CLASS B DUCTILE IRON ACCESS COVER	1
4	LA60BSEW ENCASEMENT	CONCRETE FOOTING	1

UNITS CONVERSIONS	REVISION A
METRIC TO IMPERIAL LENGTH: mm to in (x 0.03937) AREA: sq mm to sq ft (x 0.000929) VOLUME: cu mm to cu ft (x 0.0000354) MASS: kg to lb (x 2.20462) PRESSURE: kPa to psi (x 0.145038) TEMPERATURE: °C to °F (x 1.8 + 32)	DATE: 15/03/22 DRAWN BY: OL CHECKED BY: OL APPROVED BY: OL DATE: 09/11/22
Black Tank Ductile iron lid as Cast	TITLE: Alpha Treat 1200L Pump Well CLASS B DUCTILE LID INSTALLATION DRAWING NO: 202102.606 SCALE: Do Not Scale SHEET NO: A2



ITEM NO.	PART NUMBER	DESCRIPTION	CLASS D DUCTILE LID/ QTY.
1	7971 AT 1200 01a	Pump Well 1200L	1
2	LA60DSEW	GASTIGHT CIRCULAR SOLID TOP CLASS D DUCTILE IRON ACCESS COVER	1
3	LA60DSEW ENCASMENT	CONCRETE FOOTING	1

UNLESS OTHERWISE SPECIFIED:	FINISH	DEBAR AND POLISH EDGES	REVISION A
SURFACE FINISH	AS SUPPLIED		
LINEAR DIMENSIONS	mm		
ANGULAR DIMENSIONS	mm		
Black Tank Ductile Iron lid as Cast			
DRINK WATER	OL	15/02/21	
CHWD	OL	17/02/21	
APPROV	OL	08/11/21	
IMPS			
CLA			
MATERIAL		UV Polyethylene	
DRAWING NO.		202102.607	
SCALE		Do Not Scale	
SHEET NO.		1 OF 10	
REVISED		A2	

10.TROUBLE-SHOOTING GUIDE

A: Pump Motor does not run

1. Water level in pit below off float level.
2. Power failure – check isolating switches and circuit breakers or fuses.
3. Thermal motor protection set too low – adjust and reset.
4. Loose terminal connection.
5. Float Switch movement obstructed.

B: Motor trips circuit breakers or thermal overload after short time of operation

1. Temperature of pumped liquid too high.
2. Impeller jammed or partly jammed by foreign objects.
3. Phase failure.
4. Voltage too low.
5. Thermal overload set too low.
6. Impeller corroded to cover plate from lack of use or moisture entry during storage.

C: Pump runs but does not pump

1. Gate valve closed.
2. Suction strainer or discharge line blocked.
3. Pump too small for applications.
4. Incorrect direction of rotation.
5. Air lock in pump – check that pump does not suck air before switching off. Check bleed hole, located at base of pipe work on pump line is not blocked.

D: Pump will not switch off after emptying tank

1. Pump float switch adjusted too low.
2. Incorrect wiring
3. Float switch fused.
4. Pump float switch movement obstructed.

E: Tank continues emptying after pump switches off

1. Discharge line syphoning – check that discharge point is not lower than pump.

11. WARRANTY

STATEMENT OF THE WARRANTY AND SERVICE LIFE.

The WES 1200L Packaged Pump Station warranty and service life:

- Vertical axis type cylindrical (tapered) molded polyethylene pump well and Access Cover. Manufactured by Reln Pty Ltd, Ingleburn, NSW, with a nominal capacity of 1200 L. Manufactured to AS/NZS1546.1, service life 15 years.
- Pump
 1. Sewage Models, WES PPS-S 1200 Single Sewer, WES PPS-S 1200 Dual Sewer
 - Reefer Grinder Pump REG015 (or equivalent), fitted with Hi and Lo level float switches. Service life 5 years warranty period 2 years.
 2. Grey Water Models, WES PPS-S 1200 Single Greywater, WES PPS-S 1200 Dual Greywater
 - Reefer RVS200 R8218 Vortex pump (or equivalent), fitted with Hi and Lo level float switches. Service life 5 years warranty period 2 years.
- 40 mm diameter pump discharge piping fitted with a barrel union, non-return valve and isolation valve. Service life 5 years.
- An audible and visible alarm system. Service life 5 years warranty period 2 years.

WARRANTY RECORD CARD

Product Type:	WES PPS-S 1200L Single Sewer	<input type="checkbox"/>	WES PPS-S 1200L Dual Sewer	<input type="checkbox"/>
	WES PPS-S 1200L Single Grey Water	<input type="checkbox"/>	WES PPS-S 1200L Dual Grey Water	<input type="checkbox"/>
Nominal:	1200L	<input type="checkbox"/>		
Home Owners Name:	_____			
Home Owners Address:	_____			
State:	_____	Postcode:	_____	
Date of Purchase:	_____	Receipt Date & Number:	_____	
Store where tank was purchased:	_____			
Installer's (Company Name):	_____			
Date of Installation:	_____			

REGISTER YOUR PRODUCT

To further assist you with your warranty, Alpha Treat recommend registering your product. Please complete the separate warranty card enclosed with the particulars of your purchase and installation and return to Alpha Treat within one month of purchase / installation to:

Alpha Treat Pty Ltd
Attention: Customer Service
PO Box 5981
Brendale QLD 4500

WES 1200L PACKAGED PUMP STATION

Warranty Certificate

Congratulations! You have made an excellent choice of this quality product. Our commitment to quality also includes our service. Should you, contrary to expectations, experience defects due to manufacturing faults, Reln will provide you with a warranty against defects as follows:

Warranty

The WES Packaged Pump Station is guaranteed to be free from defects in workmanship and parts for a period of from the date of purchase:

- Vessel – 15 Years
- Pumps – 2 Years
- Alarm – 2 Years

Defects that occur within this warranty period, under normal use and care, will be repaired, replaced or refunded at our discretion. The benefits conferred by this warranty are in addition to all rights and remedies in respect of the product that the consumer has under the Competition and Consumer Act 2010 and similar state and territory laws. Our goods come with guarantees that cannot be excluded under the Australian Consumer Law. You are entitled to a replacement or refund for a major failure and for compensation for any other reasonably foreseeable loss or damage. You are also entitled to have the goods repaired or replaced if the goods fail to be of acceptable quality and the failure does not amount to a major failure.

Proof of Purchase

This warranty is valid for the original purchase item and is not transferable. Please keep your purchase docket, tax invoice or receipt as the best proof of purchase, and as proof of date on which the purchase was made.

Extent of Warranty

This warranty is limited to defects in workmanship or parts. Your warranty does not cover installation. WES Packaged Pump Stations must be installed strictly in accordance to installation instructions by a qualified licensed plumber and must conform to all state and local regulation requirements.

Normal Wear and Tear

This warranty does not cover normal wear and tear to the products or parts.

Exclusions

This warranty does not cover:

- Installation. Installation must be conducted by a qualified licensed plumber.
- Any defects caused by an accident, transportation, misuse, abuse, improper installation or operation, lack of reasonable care, unauthorised modification, loss of parts, tampering or attempted repair by a person not authorised by Alpha Treat.
- Any product that has not been installed, operated or maintained in accordance with the manufacturer's installation instructions provided with the product.
- Any product, system or component that is supplied in addition to the WES Packaged Pump Station.
- Any product that has been used for purposes other than domestic use.
- The cost of transportation of the product from customer to distributor or from distributor to the customer.

To Make a Claim

To obtain service under this warranty or to have the product repaired please contact Alpha Treat on 1800 607 695 with your dated sales receipt (proof of purchase) and the completed Warranty Details certificate.

Email: info@wastewaterequipment.com.au

Website: www.wastewaterequipment.com.au

Product Type:	WES PPS-S 1200L Single Sewer	<input type="checkbox"/>	WES PPS-S 1200L Dual Sewer	<input type="checkbox"/>
	WES PPS-S 1200L Single Grey Water	<input type="checkbox"/>	WES PPS-S 1200L Dual Grey Water	<input type="checkbox"/>
Nominal:	1200L	<input type="checkbox"/>		
Home Owners Name:	_____			
Home Owners Address:	_____			
State:	_____	Postcode:	_____	
Date of Purchase:	_____	Receipt Date & Number:	_____	
Store where tank was purchased:	_____			
Installer's (Company Name):	_____			
Date of Installation:	_____			

Register Your Product

To further assist you with your warranty, Alpha Treat recommend registering your product. Please complete the separate warranty card enclosed with the particulars of your purchase and installation and return to Alpha Treat within one month of purchase / installation to:

Alpha Treat Pty Ltd
Attention: Customer Service
PO Box 5981
Brendale QLD 4500



AlphaTreat

Alpha Treat Pty Ltd

9 Mackie Way, Brendale QLD 4500

Phone 1800 607 695 | Fax 07 3205 7155 | Email info@wastewaterequipment.com.au

All information contained within this manual is the property of Alpha Treat Pty Ltd.
Any duplication, alteration and/or redistribution is forbidden without written expressed permission of Alpha Treat Pty Ltd.

@ 2022 Alpha Treat Pty Ltd

PROUDLY MANUFACTURED BY Alpha Treat Pty Ltd